

History and Origins



Learn more about **the RF**

at www.rfsuny.org

- [Board of Directors](#)
- [Operating Plan and Central Office Budget](#)
- [Audited Financial Statements](#)
- [Fast Facts](#)
- [Employee Numbers by Campus](#)



The RF was chartered in 1951 by the New York State Board of Regents as a non-profit education corporation, governed by its own independent board of directors to:

CONTACT US

SUNY Research Foundation

35 State Street
Albany, NY 12207-2826

(518) 434-7000
www.rfsuny.org





WHAT IS THE RF?

The SUNY Research Foundation (RF) is the largest comprehensive university-connected research foundation in the country and supports a vibrant research ecosystem that cultivates innovation and entrepreneurship across multiple key areas including Artificial Intelligence, Clean Energy, Biotechnology, Longevity, Substance Addiction, Nextgen Quantum Computing, Environmental Health, and Resiliency

Organizational Structure

The RF comprises a central office and operating units at 30 state-operated campuses across New York State, and is governed by a board of directors.

The RF Board of Directors oversees the operations of the corporation in accordance with its stated mission and purpose. This voluntary board draws members from various constituencies including SUNY faculty, researchers, campus and system administrators, as well as individuals representing business, industry, and community sectors.

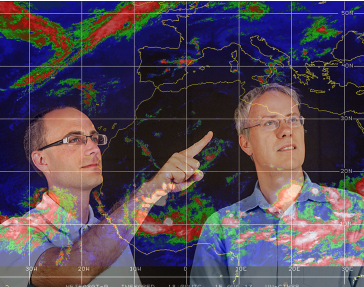
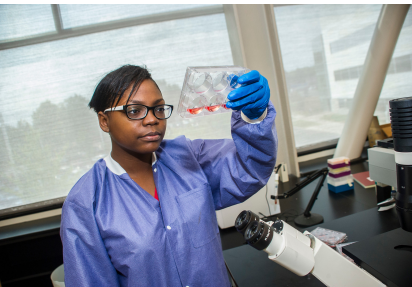
RF operations managers at the campuses are appointed by the RF president on the recommendation of the respective campus president. The RF president delegates to each operations manager the authority to execute the powers and duties necessary to conduct RF business at his or her campus in a manner consistent with the RF’s policies and overall system of controls.

WHAT DOES THE RF DO?

Driving social impact, enhancing human wellbeing and stimulating economic growth, the RF provides SUNY’s 30 state-operated campuses with an infrastructure of people, technology, and processes that enable faculty to write and submit grant proposals to agencies, foundations, and companies; establish contracts and manage funding awarded to run campus-based research projects; protect and commercialize intellectual property created within those projects; and establish enduring partnerships that shape the future.

Our **mission** is to provide talent, services, and technology that empower SUNY to research, innovate, and transfer discoveries that transform the world’s knowledge economy.

Our **vision** is to make SUNY the best place for faculty, students and staff to research, innovate, and solve the world’s most pressing problems.



Sponsored Programs Administration and Management of Research Grants

When a grant or contract is awarded to a SUNY faculty member, the RF administers and manages these funds to ensure compliance with university, grant sponsor, and government policies and procedures. Funding received by the RF in the form of a sponsored award is administered at the direction of the faculty member on whose behalf the award was received, subject to the

policies and procedures of the given campus, as well as the RF, along with any other state or federal requirements. All activity at a campus location takes place with the oversight of the RF operations manager who has designated authority to conduct RF business at his or her campus. SUNY research expenditures system-wide are nearly \$1.1 billion. The [RF System Dashboard](#) displays expenditures and other key metrics for research and innovation activity at SUNY campuses through the RF.

Technology Transfer and Management of Intellectual Property

The RF provides SUNY faculty, staff and students intellectual property and technology transfer services that fuel innovation and move ideas and inventions to the marketplace. Services include:

- Discovery
- Disclosure
- Evaluation
- Intellectual Property Protection
- Customer Discovery
- Marketing
- Partnership Management
- Asset Management
- Patent Drafting and Prosecution
- Business Development and Licensing
- New Venture Support

